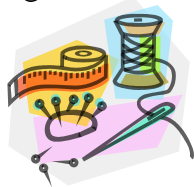


# Section 28

# HANDICRAFTS



Chief Stewards – Mrs Dorothy Every 02 6733 2117 &

Mrs Julie Stride 02 6733 2011

Entry Fee – Adults 50c Juniors 20c Max entry fee \$5  
Classes 78-83 Free Entry

Entry Forms & Signed Waiver Forms are to be submitted to the  
**Secretary's Office by 4pm Friday 3rd February 2012.**

## Conditions of Entry

- Articles must have been made during the last 12 months
- Exhibits will be accepted at the pavilion on Wednesday 8<sup>th</sup> February from 2.30pm to 5pm and before 9am on Thursday 9<sup>th</sup> February
- It is the exhibitors responsibility to attach exhibit tickets to their article
- No entries will be accepted after 9 am Thursday 9<sup>th</sup> February
- Judging will commence at 9.15am on Thursday 9<sup>th</sup> February
- No prize will be awarded unless the judge thinks it worthy
- Please note LEGO entries will NOT BE ACCEPTED
- All small articles ie. beads, earrings etc. to be attached to cardboard or suitable backing

Exhibits & prize money may be collected between 3pm to 4pm Sunday 12<sup>th</sup> February

## Open Section

- |  |  |
|--|--|
| 1. Traditional Tapestry Work, framed                       | 12. Soft Toy                                     |
| 2. Traditional Tapestry Work, own design                   | 13. Soft toy, by person over 70                  |
| 3. Traditional Tapestry Work,<br>article by person over 70 | 14. Ornamental Toy                               |
| 4. Modern Tapestry, framed                                 | 15. Bag, basket or handbag                       |
| 5. Modern Tapestry, own design                             | 16. Bag, basket or handbag by person<br>over 70  |
| 6. Modern Tapestry, article by person over 70              | 17. Christmas Decoration                         |
| 7. Longstitch, framed                                      | 18. Fabric Decorator Craft, any article          |
| 8. Longstitch, novice                                      | 19. Fabric Decorator Craft, by person<br>over 70 |
| 9. Longstitch, article by person over 70                   |  |
| 10. Handmade Bear  |  |
| 11. Ornamental Bear  |  |



- |   |   |
|---|---|
| 20. Recycled article                            | 33. Scrapbooking, heritage page                                       |
| 21. Recycled article, by person over 70         | 34. Scrapbooking, single photograph/portrait page                     |
| 22. Article suitable for fete                   | 35. Scrapbooking, family page   |
| 23. Article suitable for fete by person over 70 | 36. Scrapbooking, punch art/stamping page                             |
| 24. Leatherwork, small article                  | 37. Scrapbooking, celebration page                                    |
| 25. Leatherwork, any other article              | 38. Handmade Card, using embossing (limit of 3 per entry)             |
| 26. Woodwork, small piece of furniture          | 39. Handmade card, 3D (limit of 3 per entry)                          |
| 27. Woodwork, turned on lathe                   | 40. Handmade card, using any other technique , (limit of 3 per entry) |
| 28. Woodwork, small article turned on lathe     | 41. Beadwork, using wire  |
| 29. Woodwork, any other article                 | 42. Beadwork, using cotton  |
| 30. Woodwork, by person over 70                 | 43. Any other Beadwork  |
| 31. Any other article not mentioned             |   |
| 32. Any other article, by person over 70        |   |

#### Best Page of Scrapbooking—Classes 33-37

Champion Over 70 Handicraft Section, Purple Ribbon & \$10

Open Champion, Classes 1-9, Champion Ribbon & \$10

Open Champion, Classes 10-43, Champion Ribbon & Quota Club Trophy

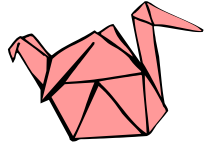
#### Intermediate Section ( 13 to 17 year old)

- |                              |   |
|------------------------------|---|
| 44. Specimen of Metalwork    | 48. Beadwork, any article               |
| 45. Leatherwork, any article | 49. Scrapbooking, a page of any subject |
| 46. Woodwork, turned article | 50. Longstitch, framed                  |
| 47. Woodwork, small article  | 51. Tapestry, framed                    |
|                              | 52. Any other article                   |

Intermediate Champion (13 to 17 yrs) , Classes 44-52, Champion Ribbon & \$10



Junior Section (11 to 12 year old)



- |                              |                                     |
|------------------------------|-------------------------------------|
| 53. Article made of Wood     | 59. Paper Mache                     |
| 54. Plasterwork, moulded     | 60. Glue Work                       |
| 55. Plasterwork, sculpted    | 61. Article using plastic           |
| 56. Wall Hanging, any medium | 62. Example of String Art           |
| 57. Leatherwork, any article | 63. Beadwork                        |
| 58. Article made from paper  | 64. Any other Article not mentioned |

Junior Champion (11 to 12 years), Classes 53-64 Champion Ribbon & \$10

Sub Junior 10 years & under

*Soft Craft – paper, felt, plastic, leather / Hard Craft – wood, plaster, copper metal*

- |  |  |
|--|--|
| 65. Article made by child 4 years & under    |  |
| 66. Article Soft Craft made by child 5 years | 67. Article Hard Craft made by child 5 years |
| 68. Article Soft Craft made by child 6 years | 69. Article Hard Craft made by child 6 years |

Best in Classes 65-69 \$3

- |  |  |
|--|--|
| 70. Article Soft Craft made by child 7 years | 71. Article Hard Craft made by child 7 years |
| 72. Article Soft Craft made by child 8 years | 73. Article Hard Craft made by child 8 years |

Best in Classes 70-73 \$3

- |   |   |
|---|---|
| 74. Article Soft Craft made by child 9 years  | 75. Article Hard Craft made by child 9 years  |
| 76. Article Soft Craft made by child 10 years | 77. Article Hard Craft made by child 10 years |

Best in Classes 74-77 \$3

Sub Junior Champion (10 years & under), Classes 65-77, Ribbon & \$5

GROUP SECTION - For a Group, Class, or School. Free Entry. Prizes 1st \$5, 2nd \$2.50

Names of group members, class year or school to be attached

Any subject, any medium - NOT TO EXCEED 1 metre square

- |                          |                               |
|--------------------------|-------------------------------|
| 78. Secondary years 7-12 | Centres for Frail Aged and/or |
| 79. Years 3-6            | People with Disabilities      |
| 80. Years K-2            | 81. Christmas Decoration      |



- |                                 |
|---------------------------------|
| 82. Any Article                 |
| 83. Any Article made by a Group |
| Champion Purple Ribbon & \$10   |

## Weaving & Spinning

### Conditions of Entry:

- Articles are not to have been exhibited at a previous Glen Innes Show
- Exhibits must conform to weight and length where stated
- Exhibits must be entirely the work of the exhibitor
- Knitted garments must be as new, i.e. unworn
- Woven articles except for tapestry weaves and floor rugs, should be washed as part of the finishing process
- Where articles are made up, the finishing is judged
- Hanks to be free of grease and tied with the same yarn as in hank

### Weaving

84. Hand-woven Shawl or Stole, any fibre
85. Scarf, any fibre
86. Woven article with Celtic Theme
87. Any other article not mentioned

### Spinning

88. Woollen hand-spun knitted, or machine knitted or crochet Jumper or Cardigan for an adult
89. Woollen hand-spun knitted, or machine knitted or crochet Jumper or Cardigan for a child
90. 25gram skein of plyed wool
91. 25gram skein of fibre other than wool
92. 25gram skein of plyed mixed fibre
93. Any other article of hand-spun yarn, any fibre

### Sincere appreciation to Donors

Shirls Beads, Quota Club, Wyaliba School, Dorothy Every,  
Lorna Lynn, Sue Sloman, Julie Stride

