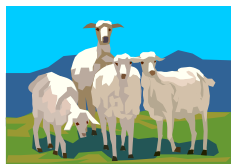


YOUNG JUDGES COMPETITIONS

Chief Steward – John Lee 02 6732 2636

Free Entry Fee to Competition. Gate Charges will apply for entry to the Showgrounds.
Competitors are eligible to progress to and compete in any group final.



SHEEP

To be held at 9:30am on Friday, 10th February, 2012

- Entrants must be under 25 years on 1st May in the year of the State Final Championship at the Royal Easter Show
- One group of four animals is judged by competitors.
- There is one visual judging class and one oral class.

Visual judging will take place first. At the completion of the visual judging, the top six competitors, judged by their aggregate marks, are selected to compete in the oral class.

Competitors in the oral class are scored on the accuracy of observation, their comparative statements, speaking ability and general presentation and dress.

Merino - 1st \$25, 2nd \$15, Third \$10

British Breeds - 1st \$25, 2nd \$15, Third \$10

Trophy donated by Geoff Strange

Prize money donated by NSW Farmers, Glen Innes Branch

WOOL

Held in conjunction with the Junior Sheep Judging Friday, 10th February, 2012

Entrants must be under 25 years on 1st May in the year of the State Final Championship at the Royal Easter Show.

1st \$25, 2nd \$15, Third \$10

Prize money donated by NSW Farmers, Glen Innes Branch

BEEF CATTLE

Judging - 1pm Friday, 10th February, 2012

Open to competitors under 25 years as at the 1st May, 2012.

Judging will commence at 1pm in the cattle ring.

The two highest scores will be eligible to compete in the Group Final.

1st \$25 2nd \$15 3rd \$10

Prize money Donated by John & Leonie Lee

